



SUGGESTED SPECIFICATIONS

Manual projection screen with a spring mechanism. Suitable for wall and ceiling mounting with the supplied flexible plastic mounting brackets (50cm). The steel square casing (8,8 x 8,8 cm) is galvanised on the inside and on the outside powder coated with a matte structure coating (RAL 9016). The grey end caps close the casing on both ends. The triangular slat bar closes the bottom of the casing on the outside. The screen surfaces are flame retardant and seamless. The projection surfaces have a 5 cm. border all around with the Video-, HDTV, and Wide format. The standard format (1:1) has a black border on both sides (width ≤ 240cm= 2.5cm and > 240cm= 5cm). The projection fabrics have a black backing. The projection screen is CE marked and satisfies the strictest quality and safety requirements.

SCREEN SURFACES

All screen surfaces are seamless.

Matte White; Gain 1.0, viewing angle 120°, Flame retardant, max. height 240 cm, max. width 280 cm.

High Contrast; Gain 1.0, viewing angle 100°, Flame retardant, max. height 240 cm, max. width 280 cm.

Datalux; Gain 1.5, viewing angle 70°, Flame retardant, max. height 240 cm, max. width 280 cm.

High Power; Gain 2.4, viewing angle 60°, Flame retardant, max. height 240 cm, max. width 280 cm.

DIMENSIONS (SELECT ONE OF OUR STANDARD SIZES AND ENTER THE REQUIRED)

Aspect Ratio	Overall Dimensions	Viewing Area	Nominal Diagonal		Case (RAL 9016)			Weight	Screen Surfaces			
	h x w cm	h x w cm	cm	inches	L1 (mm)	L2 (mm) max.	L3 (mm)	in kg	Matte White	High Contrast	Datalux	High Power
4:3	138 x 180	126 x 168	210	83	1914	1734	1820	12				
4:3	153 x 200	143 x 190	238	94	2134	1954	2040	14				
4:3	168 x 220	158 x 210	263	103	2334	1754	2240	16				
4:3	183 x 240	173 x 230	288	113	2534	2354	2440	18				
4:3	213 x 280	203 x 270	338	133	2934	2754	2840	22				
16:9	102 x 180	95 x 168	193	76	1914	1734	1820	12				
16:9	117 x 200	107 x 190	218	86	2134	1954	2040	14				
16:9	128 x 220	118 x 210	241	95	2334	1754	2240	16				
16:9	139 x 240	129 x 230	264	104	2534	2354	2440	18				
16:9	162 x 280	152 x 270	310	122	2934	2754	2840	22				
16:10	115 x 180	105 x 170	217	85	1914	1734	1820	12				
16:10	129 x 200	119 x 190	224	88	2134	1954	2040	14				
16:10	141 x 220	131 x 210	248	97	2334	1754	2240	16				
16:10	154 x 240	144 x 230	271	107	2534	2354	2440	18				
16:10	179 x 280	169 x 270	318	125	2934	2754	2840	22				
1:1	160 x 160	151 x 151			1714	1534	1620	10				
1:1	180 x 180	173 x 173			1914	1734	1820	12				
1:1	200 x 200	195 x 195			2134	1954	2040	14				
1:1	220 x 220	215 x 215			2334	1754	2240	16				
1:1	240 x 240	230 x 230			2534	2354	2440	18				

CUSTOM SOLUTIONS

Give exact the sizes of the projection screen you need:

Viewing size: _____ Height (cm.) x _____ width (cm.) Surface: _____

Border top: _____ (cm.) Border bottom: _____ (cm.)

Border left: _____ (cm.) Border right: _____ (cm.)

RAL color case and plastic parts: RAL _____

Screen fabric mounted reversely

Remarks: _____

www.projectascreens.com/screendesigner

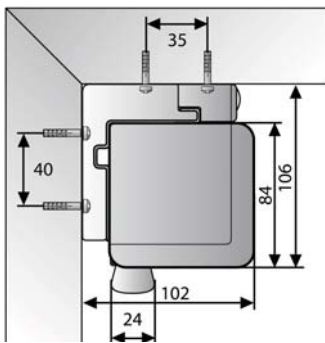
ACCESSORIES FOR OPERATION

Pull Rod

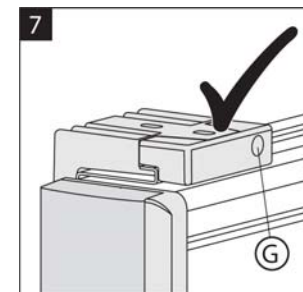
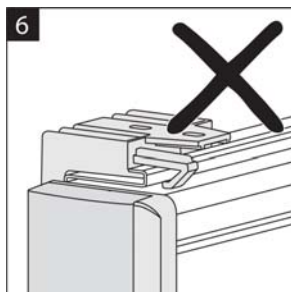
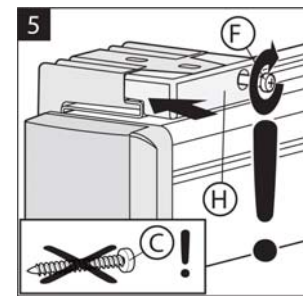
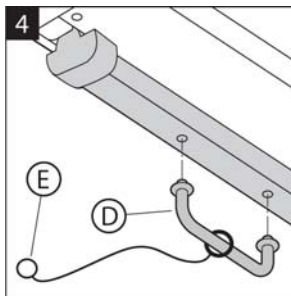
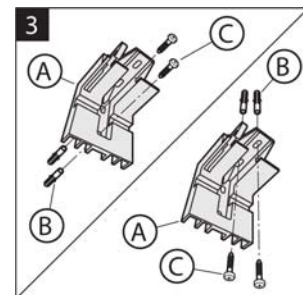
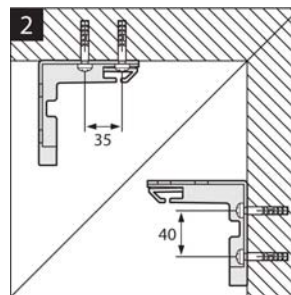
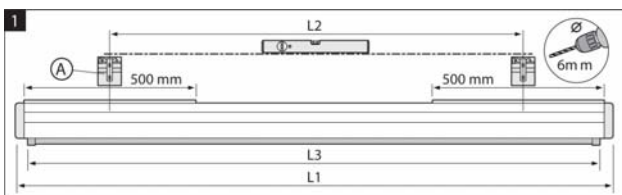
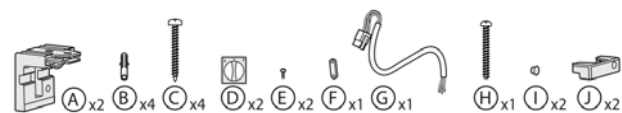
ACCESSORIES FOR MOUNTING

- Ceiling brackets (100 cm.)
- Set extension brackets (75 cm.)
- Set extension brackets (30 cm.)
- Set extension brackets (10 cm.)
- Set wall clamps
- Bracket kit for easy mounting in soffit

DIMENSIONS



INSTALLATION



Project:	_____
Architect:	_____
Phone:	_____
Contractor:	_____
Phone:	_____
Supervisor:	_____
Phone:	_____
Supplier:	_____
Date:	_____
Revised:	_____

www.projectascreens.com

Specifications subject to change.